



QUIK-LOQ™

Rapid Latching I/O Systems

NorComp QUIK-LOQ™ 8P1P Series are engineered as a high performance cost-effective solution for applications requiring quick connect / disconnect in markets including medical devices control systems and test & measurement. The series is available in a wide range of pin counts & colors. It can be combined with NorComp's value added cable assembly solutions and is fully intermateable with existing industry solutions.

FEATURES & BENEFITS

- IP50 Rated
- 2000 Mating Cycles
- Available in 2 to 14 way variants
- Temperature Range: -20°C/+120°C
- Push-Pull Latch and Release Mechanism
- Available in 6 different color codes to increase usability
- Value added cable assembly solutions available



[https:// www.norcomp.net](https://www.norcomp.net)

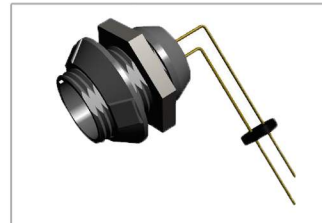
FOLLOW US:



NORCOMP

Plastic Push Pull Connectors

Series	Panel Mount			
	Cable Mount	Solder Cup	Vertical	Right Angle
8P1P	2,3,4,5,6,7,8 9,10,14 <i>(male only)</i> Flexible Boot or Plastic Nut	2,3,4,5,6,7,8 9,10,14 <i>(female only)</i> Front Mount or Rear Mount (Dual Nut)	2,3,4,5,6,7,8 9,10,14 <i>(female only)</i> Front Mount or Rear Mount (Dual Nut)	2,3,4,5,6,7,8 9,10,14 <i>(female only)</i> Rear Mount (Dual Nut)
Colors				
blue	✓	✓	✓	✓
grey	✓ <i>(standard)</i>	✓ <i>(standard)</i>	✓ <i>(standard)</i>	✓ <i>(standard)</i>
yellow	✓	✓	✓	✓
black	✓	✓	✓	✓
red	✓	✓	✓	✓
green	✓	✓	✓	✓



Right Angle



Cable Mount w/ Boot



Solder Cup - Fixed Nut



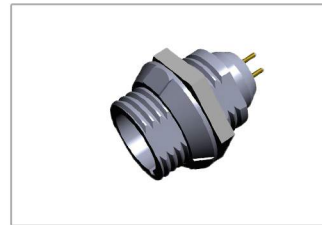
Vertical Mount - Fixed Nut



Cable Mount



Solder Cup - Two Nut



Vertical Mount - Two Nut

QUIK-LOQ™

*High Performance
Push Pull Connector
Systems*

*...robust & reliable
quick-locking
mechanism*

Website Information:

www.norcomp.net
800-849-4450