

**SPECIFICATIONS:**

**MATERIALS:**

SHELL: STEEL, TIN (80u" TIN OVER 40u" COPPER)  
OR NICKEL (80u" NICKEL OVER 40u" COPPER)

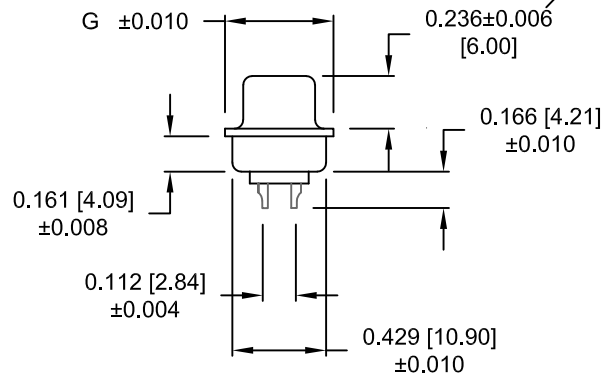
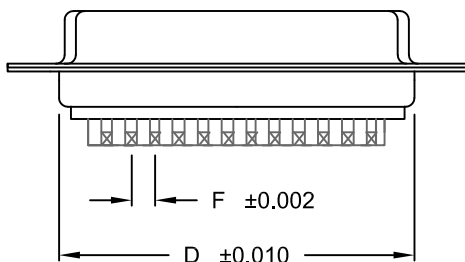
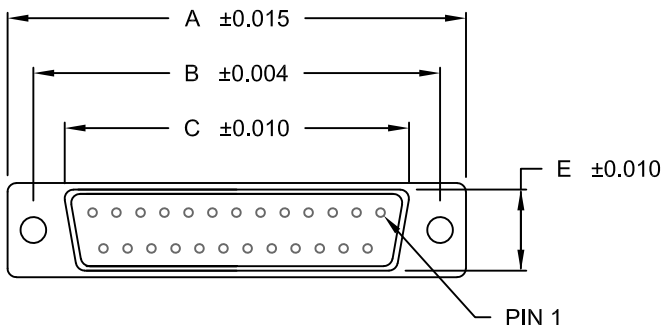
INSULATOR: UL 94V-0 RATED BLACK PBT  
+30% FIBER-GLASS

CONTACTS: COPPER ALLOY, GOLD PLATED

**ELECTRICALS:**

CURRENT RATING: 5 AMPS  
CONTACT RESISTANCE: 15 mOHMS MAX  
INSULATOR RESISTANCE: 1000 MOHMS MIN  
VOLTAGE: 500V AC FOR 1 MINUTE  
TEMPERATURE: -50°C TO +100°C

POS.	A	B	C	D	E	F	G
09	1.213	0.984	0.642	0.756	0.311	0.109	0.496
	30.80	24.99	16.30	19.20	7.90	2.77	12.60
15	1.541	1.312	0.971	1.091	0.311	0.109	0.496
	39.15	33.32	24.65	27.70	7.90	2.77	12.60
25	2.087	1.852	1.512	1.618	0.311	0.109	0.496
	53.00	47.04	38.40	41.10	7.90	2.77	12.60
37	2.728	2.500	2.157	2.256	0.311	0.109	0.496
	69.30	63.50	54.80	57.30	7.90	2.77	12.60
50	2.638	2.406	2.055	2.169	0.429	0.109	0.602
	67.00	61.00	52.20	55.10	10.90	2.77	15.30



171-YYY-20YLYY1

SERIES \_\_\_\_\_  
POSITIONS \_\_\_\_\_  
009  
015  
025  
037  
050  
GENDER \_\_\_\_\_  
1 = MALE  
2 = FEMALE  
TERMINATION \_\_\_\_\_  
0 = SOLDER CUP  
SHELL PLATING \_\_\_\_\_  
2 = TIN  
3 = NICKEL  
HARDWARE OPTIONS \_\_\_\_\_  
00 = NO HARDWARE  
01 = .098 4-40 CLINCH NUT BOARD SIDE  
02 = .236 4-40 CLINCH NUT BOARD SIDE  
03 = .236 4-40 CLINCH NUT MATING SIDE  
05 = .237 4-40 BOARD LOCK  
91 = .237 4-40 SPACER/BOARD LOCK  
PLATING OPTIONS \_\_\_\_\_  
1 = GOLD FLASH  
2 = 30 MICRO-INCH GOLD

WILL ACCEPT 28-20 AWG CONDUCTORS

RoHS COMPLIANT

UNITS = INCHES [MM] DO NOT SCALE FROM DRAWING



THESE DRAWINGS AND SPECIFICATIONS ARE THE PROPERTY OF NorComp AND SHALL NOT BE REPRODUCED, COPIED OR USED AS THE BASIS FOR THE MANUFACTURE OR SALE OF APPARATUS WITHOUT WRITTEN PERMISSION.

DRAWN:  
J. KADEL

DATE:  
07/24/2018

NorComp

SCALE:  
NTS

SHEET OF  
1 2

REV  
12

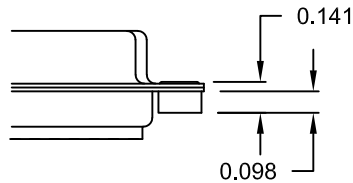
DWG NO.

171-YYY-20YLYY1

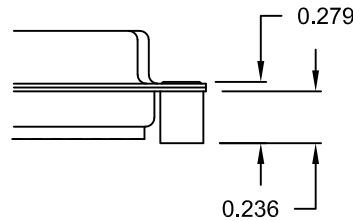
**TOLERANCE:**  
ALL DIMENSIONS ARE  $\pm 0.010$

**ALL CLINCH-NUTS ARE 4-40 INTERNAL THREADS**

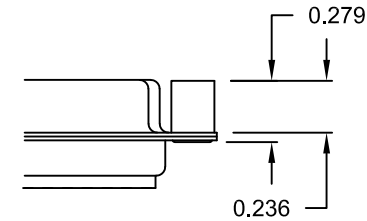
01X ..... 0.098" (BOARD SIDE) - CN1



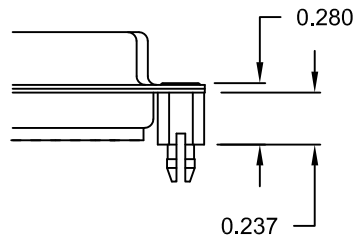
02X ..... 0.236" (BOARD SIDE) - CN2



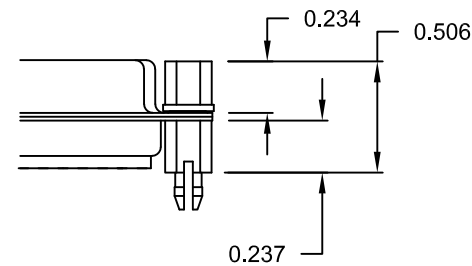
03X..... 0.236" (MATING SIDE) - CN8



05X ..... 0.237" (BOARD SIDE) - CN10



91X ..... 0.237" BOARD SIDE  
0.197" MATING SIDE  
CN10/SFSO4404



NOTE: 4-40 FEMALE SCREW LOCK IS REMOVABLE

**RoHS COMPLIANT**

UNITS = INCHES [MM] DO NOT SCALE FROM DRAWING



THESE DRAWINGS AND SPECIFICATIONS ARE THE PROPERTY OF NorComp AND SHALL NOT BE REPRODUCED, COPIED OR USED AS THE BASIS FOR THE MANUFACTURE OR SALE OF APPARATUS WITHOUT WRITTEN PERMISSION.

DRAWN:  
J. KADEL  
DATE:  
07/24/2018

**NorComp**

SCALE: NTS	SHEET 2	OF 2	REV 12
DWG NO.		171-YYY-20YLYY1	