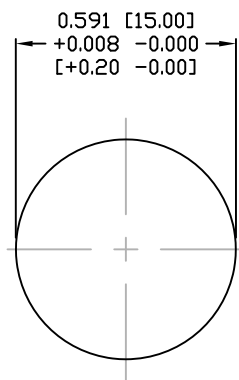
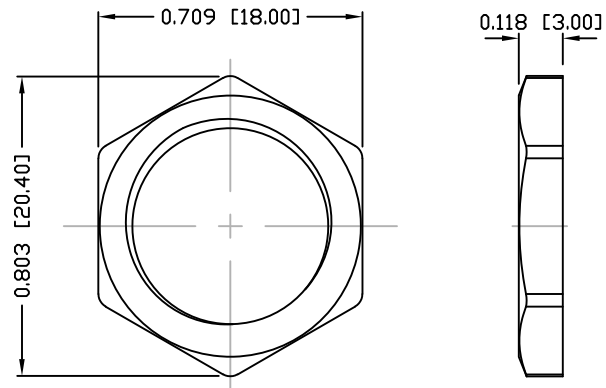


DESCRIPTION: M12 FEMALE - RIGHT ANGLE - 5 POS.



PANEL CUTOUT



NUT

NOTE:

MATERIAL

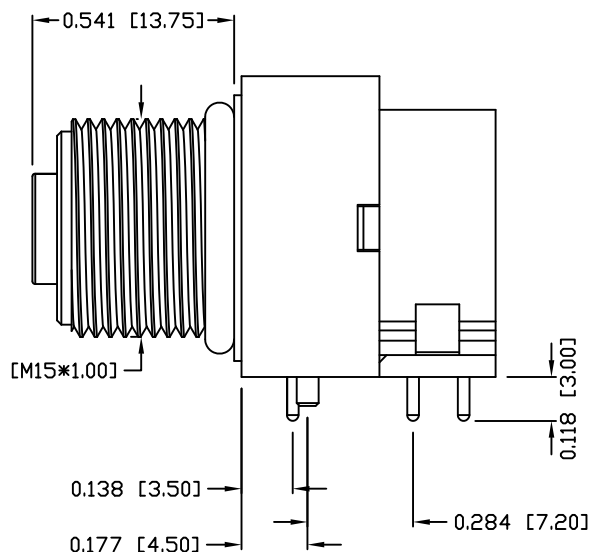
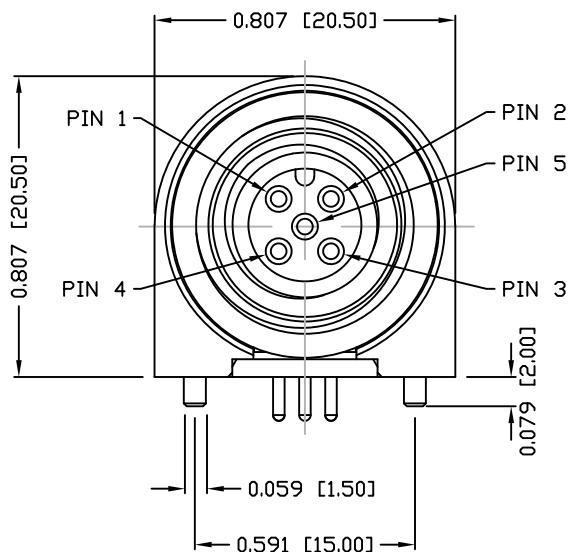
- HOUSING: PBT UL94V-0, BLACK
 - CONTACT: BRASS
 - NUT: BRASS
 - O-RING: NBR, BLACK
 - BACK HOUSING: PBT, UL94V-0, BLACK
 - DOWN HOUSING: PBT, UL94V-0, BLACK
- FINISH
- CONTACT: GOLD PLATED
 - UNDER PLATE: NICKEL
 - SHELL: STAIN NICKEL
 - (80-100 μ) OVER ALL

ELECTRICAL

- RATED CURRENT: 5A
- RATED VOLTAGE: 125V
- INSULATION RESISTANCE: 100 M Ω hms MIN.
- CONTACT RESISTANCE: 10 m Ω hms MAX.
- WATER PROOF: IP67

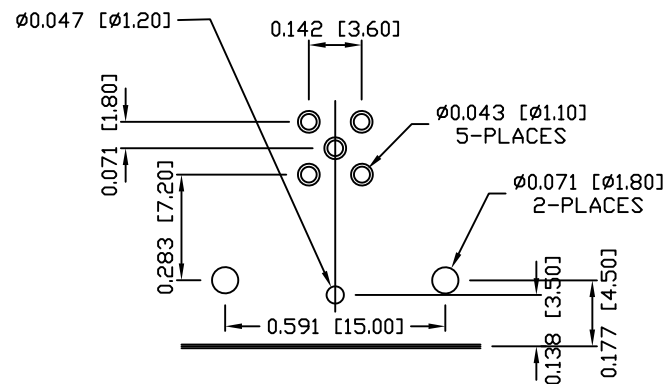
ENVIRONMENT

- OPERATION TEMPERATURE: -40°C TO +85°C



861-005-213R00Y

- 1 = GOLD FLASH
- 4 = 10 μ " GOLD



PLC LAYOUT

RoHS COMPLIANT

DO NOT SCALE FROM DRAWING



THESE DRAWINGS AND SPECIFICATIONS ARE THE PROPERTY OF NorComp AND SHALL NOT BE REPRODUCED, COPIED OR USED AS THE BASIS FOR THE MANUFACTURE OR SALE OF APPARATUS WITHOUT WRITTEN PERMISSION.

DRAWN:

M. SIGMON

DATE:

03-07-16

NorComp

SCALE: NTS

SHEET 1 OF 1

REV 2

DWG NO.

861-005-213R00Y