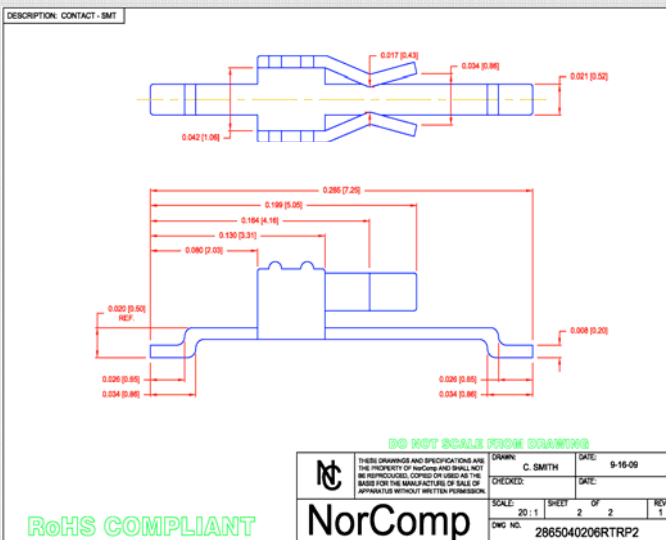


## Company Overview

This OEM customer manufactures LED lighting systems for commercial refrigerator and freezer display cases.

This lighting system utilizes surface mounted 2mm 4 pin socket and header connectors as the interface within the individual lighting modules.



## NorComp's Challenge

The customer was experiencing intermittent opens in the 2mm connector system provided by a competitor. This issue was caused by the low temperature and vibration within the cases .

The 2mm system the customer had specified used a single beam contact which had fairly low normal force and contact retention. This led to eventual fret corrosion and the resulting intermittencies.

## Success Story

NorComp was able to provide a female surface mount connector with a dual beam contact and 30u" plating that eliminated the fret corrosion problems.

A snap in board locking system on the male header added another layer of stability to the overall connector system which resulted in a significant design win for NorComp.

LED Display Lighting  
Refrigerated Vertical Cases

