



EM SERIES

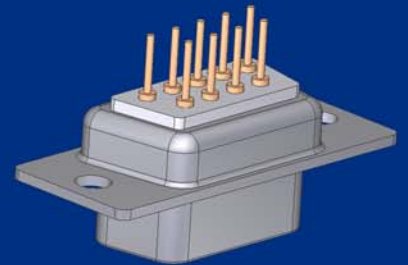
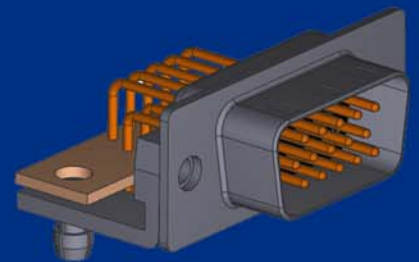
Machined Connector Performance



M-SERIES D-Sub connectors are designed for rugged / robust applications including medical, industrial, and aerospace. Featuring "Solid Pin" machined contacts, these connectors offer high reliability performance for the most challenging design applications.

FEATURES & BENEFITS

- Available in 10 industry standard sizes:
(Standard: 9, 15, 25, 37, 50 | High Density: 15, 26, 44, 62, 78)
- Solder Cup, Vertical Mount, & Right Angle Board Mount Options
- **Screw Machined Contacts for High Mating Cycles**
- 5 amp contact rating / -55C to +105C operating temperature range
- Metal shells provide excellent EMI/RFI shielding
- Intermates with most commercial competitive products



[http:// www.norcomp.net](http://www.norcomp.net)

NORCOMP



M SERIES

Machined Connector Performance

Standard

	Series	Size
Cable Mount	172-YYY-Y02RYY1	9/15/25/37/50 Position
Cable Mount	172-EYY-Y0YRYY1	9/15/25/37/50 Position
Vertical Mount	172-YYY-Y12RYY1	9/15/25/37/50 Position
Vertical Mount	172-EYY-Y13RYY1	9/15/25/37/50 Position
High Profile	172-YYY-Y83RYY1	9/15/25/37/50 Position
Wire Wrap	172-YYY-Y42RYY1	9/15/25/37/50 Position
Right Angle PCB Mount (0.283" Footprint)	173-EYY-Y13RYY1	9/15/25/37/50 Position
Right Angle PCB Mount (0.370" Footprint)	174-EYY-Y13RYY1	9/15/25/37/50 Position

High Density

	Series	Size
Cable Mount	180-MYY-Y03LYY1	15/26/44/62 Position
Vertical Mount	180-MYY-Y13RYY1	15/26/44/62 Position
Low Profile	197-YYY-Y13LYY1	15/26/44/62/78 Position
High Profile	196-YYY-Y13LYY1	15/26 Position
Right Angle PCB Mount	181-MYY-Y13RYY1	15/26/44/62 Position



M SERIES

*Screw Machined
Contacts for High
Mating Cycles*

*...and applications
requiring rugged,
reliable performance.*

For More Information

www.norcomp.net
800-849-4450

NORCOMP

