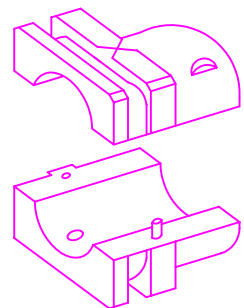
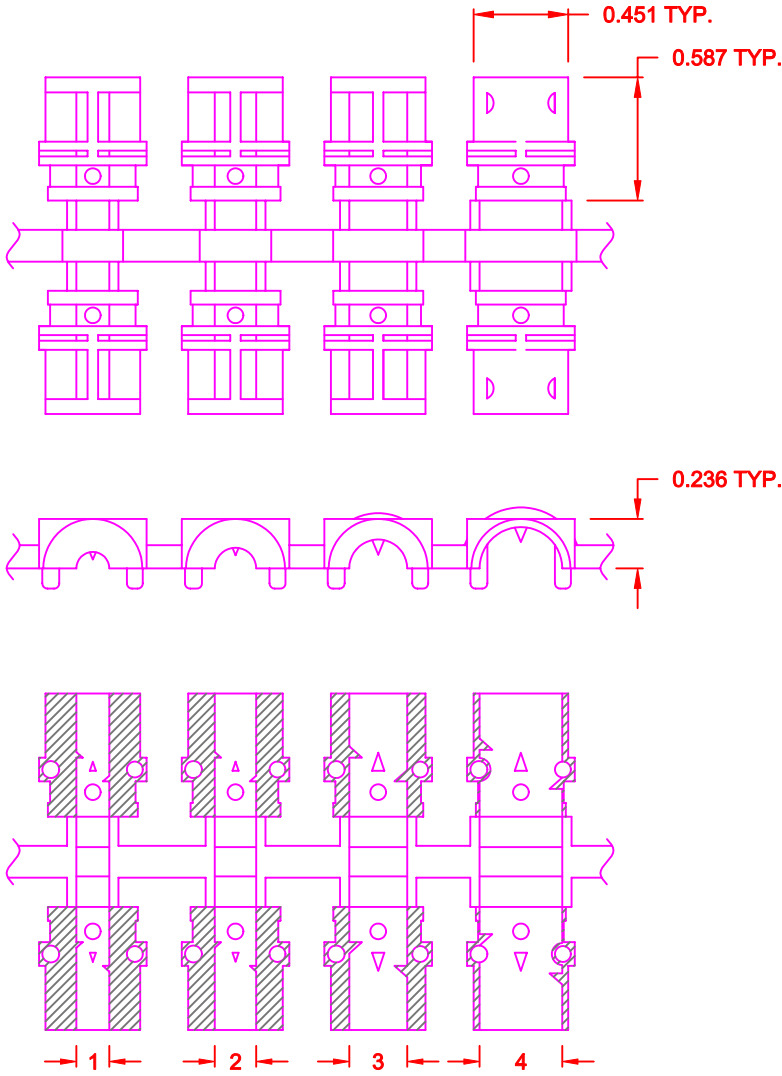


**SPECIFICATION:**

PLASTIC: UL APPROVED ABS PLASTIC VH-0800  
BLACK, UNSHIELDED



INSERT DIMENSIONS		
NUMBER	in.	mm
1	0.157	[4.0]
2	0.197	[5.0]
3	0.276	[7.0]
4	0.394	[10.0]

**NOTE:**  
INSERTS MAY BE MIXED TO  
BEST FIT THE CABLE USED

**970-RACIR010**

BACKSHELL SERIES — 970  
971  
DESCRIPTION — RAPID  
ASSEMBLY  
COMPRESSION  
INSERT  
RoHS COMPLIANT —  
MATERIAL — PLASTIC

**PLASTIC GROMMETS**

**DO NOT SCALE FROM DRAWING**

**RoHS COMPLIANT**

	THESE DRAWINGS AND SPECIFICATIONS ARE THE PROPERTY OF NorComp AND SHALL NOT BE REPRODUCED, COPIED OR USED AS THE BASIS FOR THE MANUFACTURE OF SALE OF APPARATUS WITHOUT WRITTEN PERMISSION.		DRAWN: <b>N. KOVALSKY</b>	DATE: <b>07-08-08</b>
			CHECKED:	DATE:
<b>NorComp</b>	SCALE: <b>FULL</b>	SHEET <b>1</b>	OF <b>1</b>	REV <b>0</b>
	DWG NO. <b>970-RACIR010</b>			