

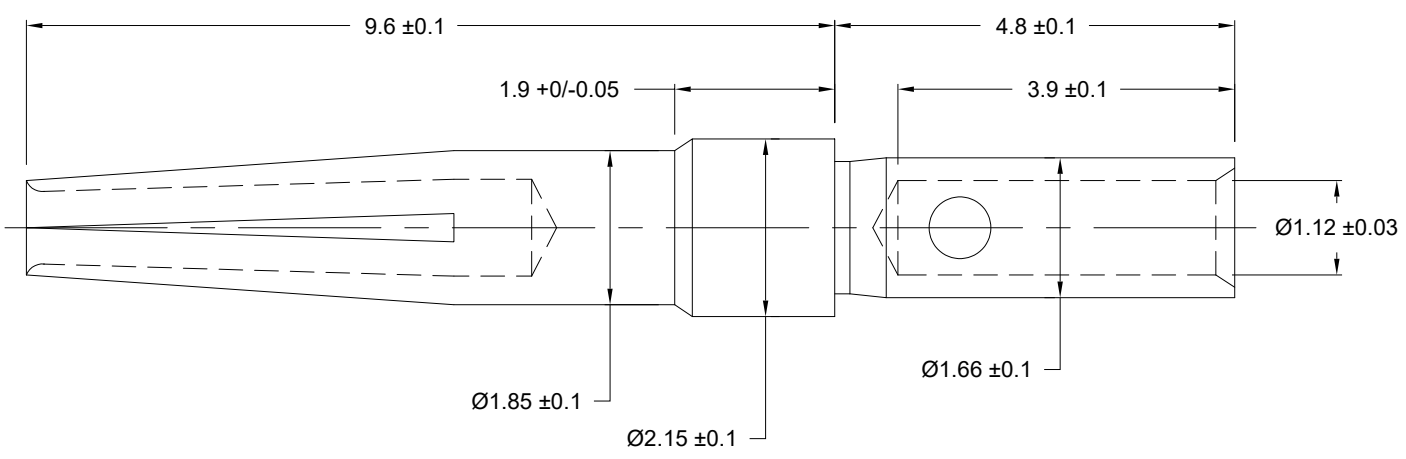
MATERIAL: BRASS

PLATING: Au/Ni

WIRE SIZE: 20-26 AWG RECOMMENDED

CONTACT CURRENT RATING: 5A MAX.

NOTE #1: CONTACTS SUPPLIED
LOOSE PIECE (500 PER BAG)



	NORCOMP PART NUMBER
250 MATING CYCLES // CLASS 2	170-202-170L003

RoHS COMPLIANT

UNITS = mm

DO NOT SCALE FROM DRAWING



THESE DRAWINGS AND SPECIFICATIONS ARE THE PROPERTY OF NorComp AND SHALL NOT BE REPRODUCED, COPIED OR USED AS THE BASIS FOR THE MANUFACTURE OR SALE OF APPARATUS WITHOUT WRITTEN PERMISSION.

DRAWN:
C. SMITH
DATE:
01/15/2009

NorComp

SCALE: NTS	SHEET 1	OF 1	REV 10
DWG NO.		170-202-170L003	