

DESCRIPTION: INTERNAL DIMENSIONS - PLASTIC & METALIZED PLASTIC

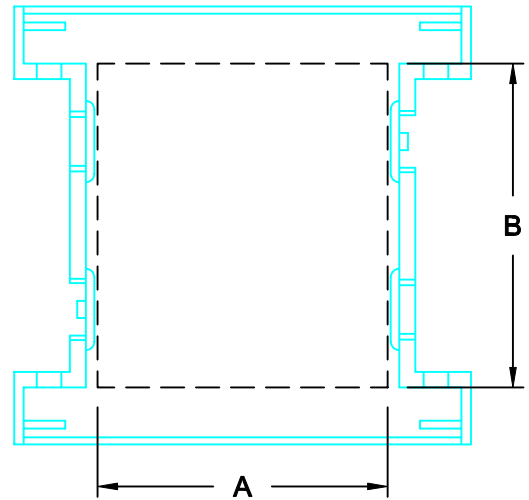
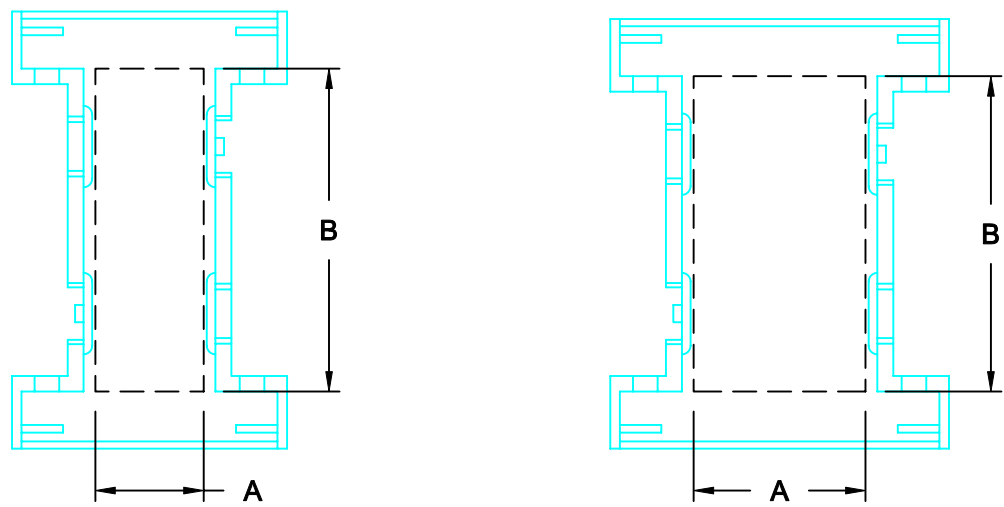
DIMENSIONS (IN.)

	9	15	25
A	0.490	0.815	1.395
B	1.508	1.428	1.475
PCB	0.420	0.420	0.420

SEE NOTE 1. →

NOTE:

1. MIN. SAFE SPACING BETWEEN BACK SHELLS FOR PCB AND MOUNTED COMPONENTS
2. THESE DIMENSIONS ARE GOOD FOR THE PLASTIC AND METALIZED PLASTIC BACK SHELLS



PLASTIC & METALIZED PLASTIC

DO NOT SCALE FROM DRAWING

RoHS COMPLIANT

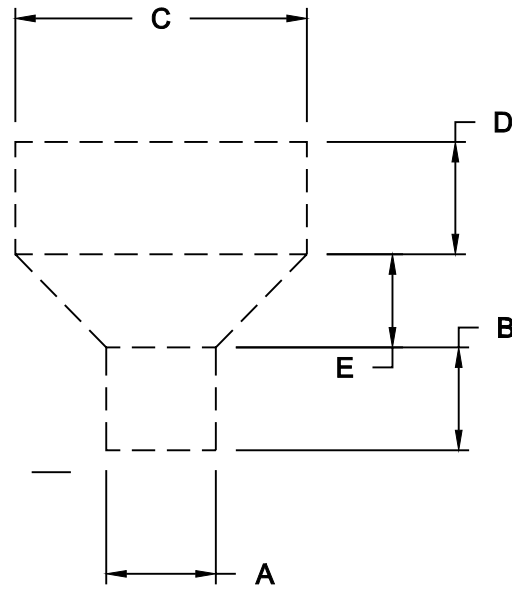
	THESE DRAWINGS AND SPECIFICATIONS ARE THE PROPERTY OF NorComp AND SHALL NOT BE REPRODUCED, COPIED OR USED AS THE BASIS FOR THE MANUFACTURE OF SALE OF APPARATUS WITHOUT WRITTEN PERMISSION.		DRAWN: C. SMITH	DATE: 05-14-07
			CHECKED:	DATE:
<h1>NorComp</h1>		SCALE: N.T.S.	SHEET 1 OF 2	REV 0
		DWG NO. ID - 957 SERIES		

DIMENSIONS (IN.)					
A	B	C	D	E	PCB
0.521		1.368	0.480	0.460	0.428

SEE NOTE 1. ↗

NOTE:

K SHELLS



**PLASTIC &
METALIZED
PLASTIC**